

Jerangle Public School

Parent Handbook  
2018-19

# Welcome to Jerangle Public School

---

On behalf of the staff and students I would like to warmly welcome you and your family to Jerangle Public School. Our school is a small and caring environment where every child is known and cared for. We strive to provide our students with a wide variety of experiences within the key learning areas as well as an extensive array of extracurricular activities. Despite our isolation, or perhaps because of it, our school has excellent amenities, infrastructure and programs to enhance our students' learning. We highly value and encourage involvement from our students' family members as well as the wider community.

I look forward to working with you to make your child's education a wonderful and rewarding experience.

Michael Schwetz  
Relieving Principal

## Contacting the School

---

**Address:** 2892 Jerangle Road, Jerangle, NSW 2630

**Website:** <https://jerangle-p.schools.nsw.gov.au/>

**Principal:** [michael.schwetz1@det.nsw.edu.au](mailto:michael.schwetz1@det.nsw.edu.au)

**Facebook:** <https://www.facebook.com/jeranglepublicschool/>

**Phone:** 02 6454 3127

**Email:** [jerangle-p.school@det.nsw.edu.au](mailto:jerangle-p.school@det.nsw.edu.au)

**Facebook Messenger** 

The School hours are from 8:30-3pm each day. Staff are often available outside these hours to meet or speak with parents however if you wish to speak with a specific staff member at a particular time please arrange an appointment.



# Our Staff

Our student cohort generally ranges from six to fifteen students. Although we are classified as a 'one teacher school' we boast an extensive array of teaching and support staff to support the learning and administration of the school. We also have access to a network of student support services including school counselling, learning and wellbeing and curriculum support.

## 2018 School Staff

Relieving Principal	Mr Michael Schwetz
Part-time Teacher	Miss Lisa Coyne
School Administrative Manager	Mrs Helen Boate
School Learning Support Officers	Miss Kelsey Rourke Mrs Carolyn Ewart
General Assistant	Mr Peter Ewart



# School Routine

---

8:30 am	Staff duty commences. Upon arrival students place their bag outside the classroom and report to the teacher on duty.
9:00 am	Daily fitness. Students assemble on the tennis court.
9:15 am	Learning session 1 including Fruit Fix
11:00 am	Recess
11:30 am	Learning Session 2
1 pm	Lunch
1:40 pm	Learning Session 3
3 pm	Lessons conclude. Students are walked to the front gate to board the bus or be collected by parents.

Due to the distance travelled the school day may commence early and /or finish late on days of an excursion. This information is provided to parents and carers prior to the day.

## 2018/19 Term Dates

---

2018	
Term 1	Monday 29 January to Friday 13 April 2018
Term 2	Tuesday 1 May to Friday 6 July 2018
Term 3	Tuesday 24 July to Friday 28 September 2018
Term 4	Monday 15 October to Wednesday 19 December 2018

2019	
Term 1	Wednesday 30 January to Friday 12 April 2019
Term 2	Tuesday 30 April to Friday 5 July 2019
Term 3	Monday 22 July to Friday 27 September 2019
Term 4	Monday 14 October to Wednesday 18 December 2019

# School Uniform

---

Our school uniform is a symbol of belonging and pride. As such it is expected that students will wear full school uniform each day unless advised otherwise for a special event.

Our school uniform is gender neutral with the option for girls to wear a summer tunic or a skirt.

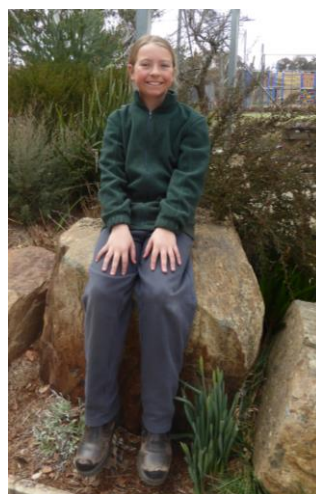
## Summer

- Grey shorts or skirt
- Green polo shirt
- Green school bucket hat



## Winter

- Grey trousers or track pants
- Green polo shirt
- Green jumper
- Green or white skivvy or undershirt



## Uniform Supplier

Embroidered shirts and jumpers are available on order from **South East Embroidery – 40 Bombala St Cooma**. Please contact the supplier for current pricing.

Green bucket hats are available from the school office for \$5.

Student name badges are supplied by the school for excursions and special events.

# School Publications

The school communicates with parents and the community using a variety of methods.



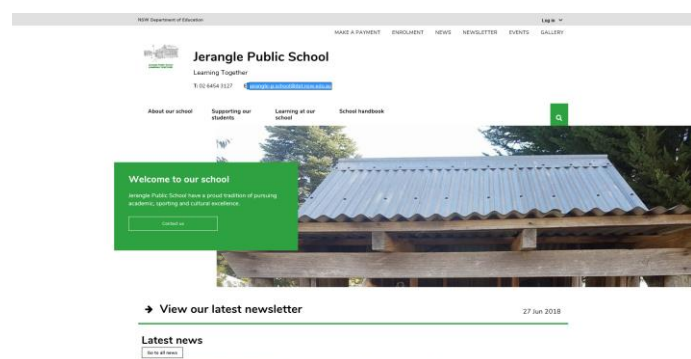
## Newsletter

The fortnightly newsletter provides parents and the community with important dates, upcoming events and information as well as a review of the school's activities. The newsletter is written and sent home with students each even week of the term as well as being distributed locally and published on the school website and Facebook page.

## Facebook

The school's Facebook page provides up to date information, reminders and photos about school events. It allows news and photos to be delivered directly to parents and community members who have liked the page. It can be viewed at

<https://www.facebook.com/jeranglepublicschool/>



## School Website

The school website is currently being rebuilt in 2018. It is updated less often and provides more static information about the school. It can be viewed at

<https://jerangle-p.schools.nsw.gov.au/>

# Enrolment

---

We can help you with enrolment enquiries at any time throughout the school year. Please contact the school to arrange a time to meet the principal and tour the school facilities.

## Starting school

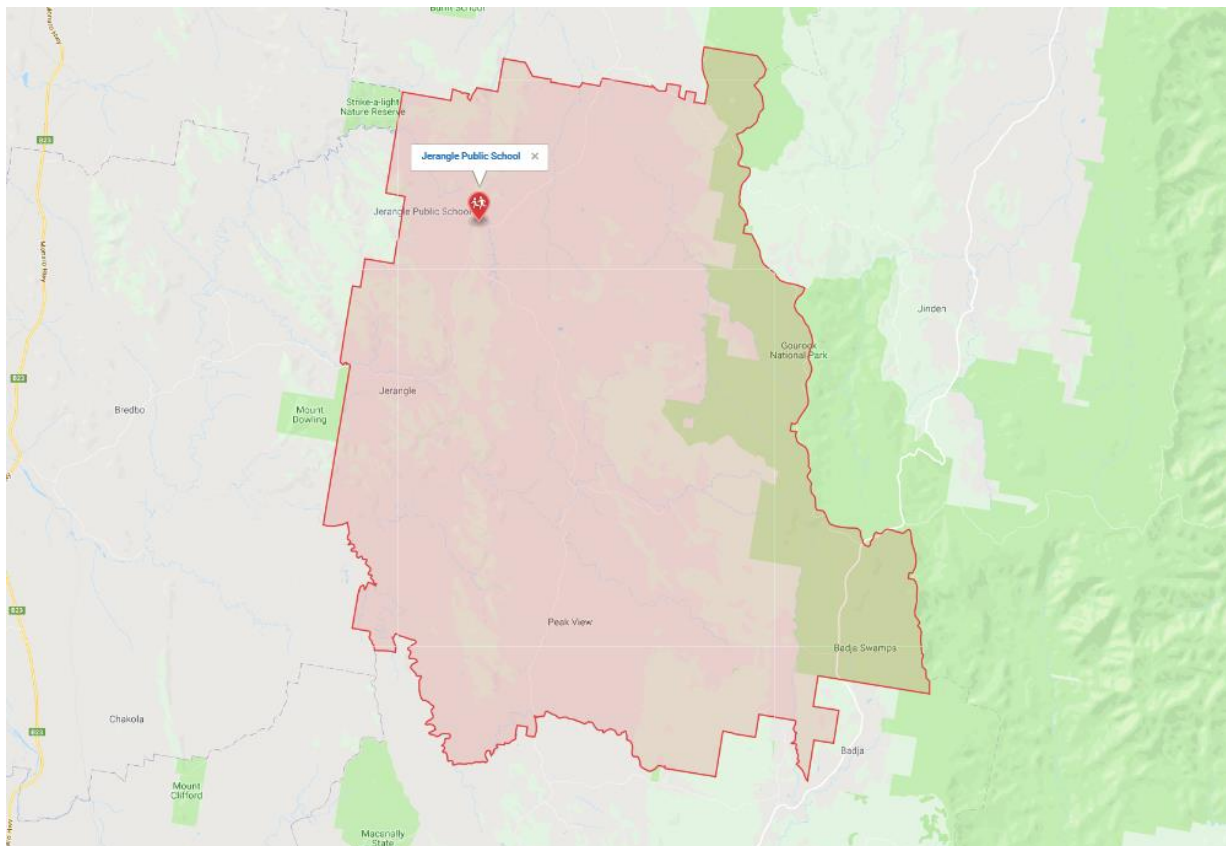
Children may start kindergarten if they turn five on or before 31<sup>st</sup> July of that year. By law all children in NSW must be enrolled and attending school by their sixth birthday. As students start work and form friendships at the beginning of the year it is highly recommended that students begin school at the beginning of Term 1.

## Enrolling in other years

Parents/carers may apply to enrol their children at any time throughout the year if they are transferring from another NSW Department of Education school, from interstate or from a non-government school. Slightly different procedures apply in each case.

## Enrolment zone

Students who reside within the following area are zoned to attend Jerangle Public School as their local school. Students who reside outside this area are regarded as 'out of area' enrolments. Out of area enrolments may be denied if it is beyond the capacity of the school staffing and facilities to accept them.





### Applying to enrol and the enrolment interview

If you decide to proceed with an enrolment application an enrolment form will be provided and a formal interview scheduled.

If your child has not previously enrolled in a NSW Department of Education school you will need to bring the following original documents with you to the enrolment interview:

- Child's birth certificate or identity documents
- Proof of child's address – residential lease, electricity bill etc.
- Immunisation history statement from the [Australian Immunisation Register](#) (AIR)
- Any family law or other relevant court orders, if applicable

If your child has health, disability or other support needs you will need to provide:

- copies of medical/healthcare or emergency action plans
- evidence of any disability and learning and support plans

If your child is already enrolled in a NSW Public School you only need to bring the following documents with you to the enrolment interview:

- proof of child's address – current council rates notice, residential lease, electricity bill and so on
- any family law or other relevant court orders, if applicable

If your child has health, disability or other support needs you will need to provide:

- copies of medical/healthcare or emergency action plans
- evidence of any disability and learning and support plans

### Temporary residents

Different procedures apply to attending NSW public Schools if you are a temporary resident. Please contact the school to discuss your options.

## JETS Kindergarten Transition

---

The Jerangle Early Transition to School program better known as JETS runs in the latter part of each year. Students who are eligible to attend school the following year are warmly invited to attend to learn what life at 'big school' is all about. Sessions run weekly beginning with two hour sessions before progressing to full days. For further information please contact the school.



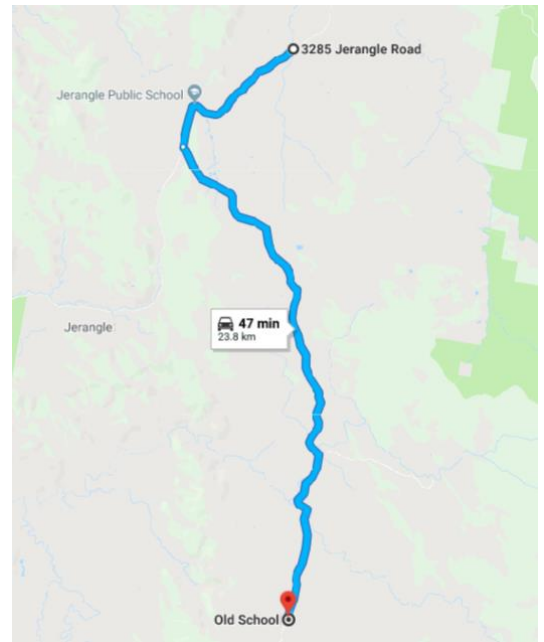


# Transport to School

The school is serviced by a school bus service which runs each morning and afternoon. The route currently runs from the vicinity of the intersection of Peak View Road and Bundarra Road to the intersection of Jerangle Road and Slap Up Road at Towneys Creek.

To access the service parents or carers are required to apply to the [School Student Transport Scheme](#). Students who are not covered by the bus service or need to travel to the nearest bus stop are able to apply for the [School Drive Subsidy](#) to offset some of the cost.

Parents are advised that there is no safe walking or cycling route to the school or school crossing facility. It is strongly recommended that students do not walk or ride to school.



# Educational Programs

Jerangle Public School provides our students with access to a wide variety of programs and resources to enhance their learning. Generally these learning programs are provided at no cost to parents utilising school funding and grants. These programs include

- Online access to Mathletics, Typing tournament and Reading Eggs at home and at school
- Weekly drama and guitar programs
- Tennis coaching through Sporting Schools
- Homework and home reading program
- Library program
- Access to STEM through school robotics and NSW DoE STEMShare kits
- 1:1 computer program
- Soundwaves spelling and grammar program
- Personalised learning pathways for each student

# Curriculum and Key Learning Areas

---

Jerangle Public School provides quality learning experiences in line with The New South Wales Educational Standards Authority's NSW Syllabuses for the Australian curriculum. These documents state what content must be taught and divide it into six key learning areas:

## English

- Reading and viewing
- Writing and representing
- Talking and listening
- Grammar, punctuation and vocabulary
- Handwriting and using digital technologies
- Thinking imaginatively and creatively
- Expressing themselves
- Reflecting on learning

## Mathematics

- Number and Algebra
- Measurement and Geometry
- Statistics and Probability
- Working Mathematically

## Science and Technology

- Natural environment
- Made environment
- Working scientifically
- Working technologically
- Digital technologies and ICT (from 2019)

## Human Society and Its Environment

- History
- Geography

## Creative Arts

- Music
- Visual Arts
- Craft
- Drama

## Personal Development, Health and Physical Education

- Personal Development
- Health Education
- Physical Education
- Child Protection

# Excursions and Special Events

Jerangle Public School students participate in a wide variety of events designed to support and extend their learning. Student participate in weekly drama and music lessons

## Excursions and sport

- Curriculum-linked excursions are used to help student understand what they have been learning in class.
- Small school fun days ensure that students have the opportunity to interact and develop friendships with a much wider group of peers and readies them for the eventual transition to high school.
- Sports days give students the opportunity to compete against other students in a variety of sports and events
- Swimming lessons run weekly in Term 4 to develop life preserving water safety confidence and skills.

## Camps

- The major excursion allows students to experience the attractions of a large city or town. These excursions may run for several nights. All students are encouraged to participate and as such parents and carers of younger students are welcome to attend.
- Monaro small schools camps are designed to allow Year 5-6 students the opportunity to interact with students from other local small schools to develop friendships and confidence before attending high school.

## Assemblies

- Student led assemblies are held every Friday at 2:40pm. This allows students to receive weekly awards and present their item. Parents, caregivers and members of the local community are warmly invited to attend.
- The annual presentation night is held in the second last week of Term 4. Annual awards are presented as well as the annual school play and musical items.

## Special Days

Special days are held throughout the year to extend student learning and welcome parents, carers and community members into the school. Each year's events vary but have previously included:

- Mum's day and dad's day
- Brain Break Science day
- Grandparent's day
- Pink Stumps cricket day



# Positive Behaviour and School Rules

---

## The FISH Philosophy

Jerangle School operates under the FISH Philosophy which is based on 4 main elements. These are:

- Choose your attitude
- Make their day
- Be there
- Have fun

The school uses these key concepts to develop resilience, respect, honesty and friendship to all students.

Students are rewarded for good behaviour as well as academic pursuits and are given “Fish Bites” that can be collected and traded for a choice at the prize box.

## The School Rules

The same rules are in place throughout the classroom and playground. Rather than an extensive list of do’s and DON’T’S our rules set parameters by which students can assess and regulate their own behaviour. Students are required to behave in a way which takes into account:

- Safety
- Respect
- Effort
- Listening, and
- Right place, right time



JERANGLE PUBLIC SCHOOL  
LEARNING TOGETHER

